



SAILING CENTRE

The Sailing Centre is a new structure born in 2001 specialized in dinghies and windsurf, with a prevalent young target. It is an area of 20.000 square metres in Quartu Sant'Elena coast and faces the Golfo degli Angeli. Very important characteristic is the proximity (150/200 m) of three hotels with a capacity of 1.100 beds.



In the Sailing Center you will find:

- Car and trolleys parking area
- Area for boat parking and outdoor repairs
- Must deposit and repair
- Briefings and meetings
- Meals distribution
- Signal and information area
- Boats and equipment washing area
- Outdoor showers
- Sail temporary deposit

• Social Building

- 1) Reception and wardrobe
- 2) Secretary and administrative office
- 3) Didactic room
- 4) Jury and Race Committee Rooms
- 5) Bathrooms
- 6) Press area
- 7) Briefing rooms

8) TV and video rooms

9) Ship chandler area

10) First aid

11) Changing rooms and toilets

• Other Buildings

1) Entrance lodge and parking area

2) Bar, Restaurant, Pizzeria

3) Equipment drying area

4) Sail and equipment deposit

5) Support boats, marks and sailing school dinghies deposit

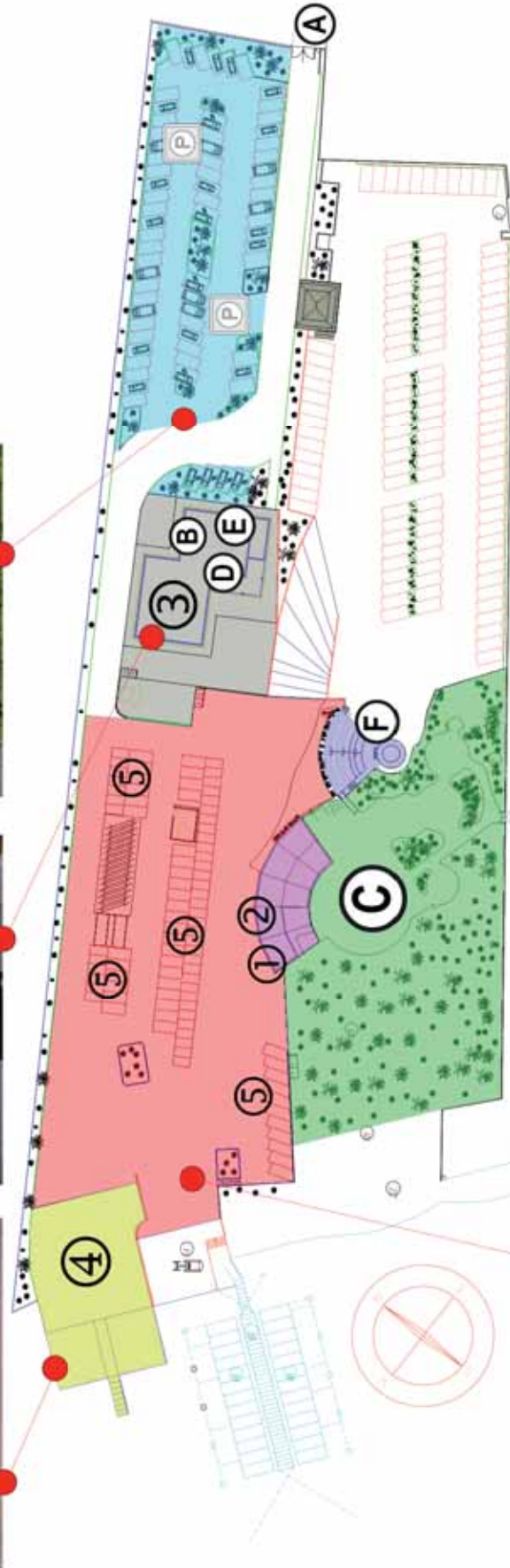
6) workshop and fuel deposit

7) Measurement area (boat inspections)





SAILING CENTRE MAP SUP. 20.000 m²



- ① Boat Measurement Station
- ② Sail Measurement Station
- ③ Race Office, Jury and Race Committee
- ④ Slip Way
- ⑤ Boat park

- ### Sailing Centre
- Ⓐ Club Entry
 - Ⓑ Press Office
 - Ⓒ Restaurant
 - Ⓓ Club Office
 - Ⓔ Toilets
 - Ⓕ Amphitheatre

